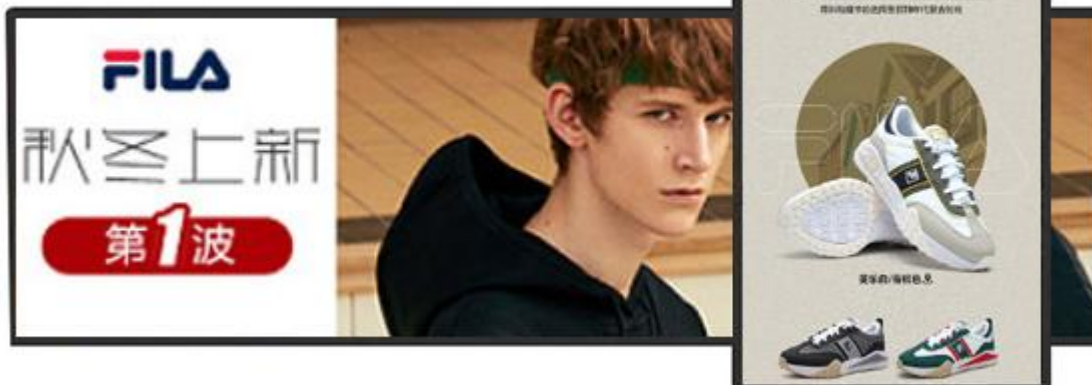


YXDXXL

Indoor  
Stretched LCD Screen



Address:

3-4F, Longwenda Technical Park, No.14, Liuxian 1st Road, Baoan 71 District, Shenzhen, Guangdong Province, China

Tel:0086-755-27661355

Fax:0086-755-27865721

Mob:0086-13724286047

E-mail: lynn.l@asianda.cn

# Shenzhen Yaxunda LCD Display Equipment Co.,Ltd

<b>Panel Size</b>	<b>12inch</b>	<b>19inch</b>	<b>44.9inch</b>	<b>56.6inch</b>	<b>58.4inch</b>
<b>Model No.</b>	YXD12L	YXD19L	YXD45L	YXD56L	YXD58L
<b>Solution</b>	HDMI In solution, without any system				
<b>LCD specification</b>					
<b>Panel Brand</b>	AUO				
<b>Panel Number</b>	C120HAT01.3	G190SF01 V0	P449SVN01.0	P566KVN01.1	P584KVN01.0
<b>Display Area</b>	278.208 x 124.614	473.76 x 96.44	806.4(H) x 806.4(V)	1428.48x 159.96	1428.48 x 401.76
<b>Resolution</b>	1920x860	1680x342	1280 x 1280	3840x430	3840x1080
<b>Contrast</b>	1400:1	2000:1	4000:1		
<b>Brightness</b>	1035nits	300nits	700nits		
<b>Color</b>	16.7M	16.7M, 72% NTSC	8 bit (16.7 million)	8 bit + FRC (1.07 billion)	
<b>Viewing angle</b>	160/160	178/178	178/178		
<b>LED backlight</b>	Yes				
<b>Response time</b>	8ms				
<b>Operation Time</b>	24/7				
<b>Life</b>	50000(hrs)				
<b>Power</b>					
<b>Power supply</b>	AC110-240V 50-60Hz				
<b>Operation temperature</b>	0 +40°C (no condensation)				
<b>Operation humidity</b>	20%-80% (no condensation)				
<b>Hardware Specification (Optiona)</b>					
<b>CPU</b>	RK3288				
<b>Memory</b>	2GB				
<b>Nand flash</b>	16GB				
<b>Storage port</b>	USB, SD card, SATA port hard disk storage				
<b>OS</b>	Android 7.1				
<b>WiFi</b>	Yes, inbuild WiFi(802.11b/g/n);				
<b>4G</b>	Optional to add(including GPS)				
<b>Structure</b>					
<b>Color</b>	Black				
<b>Speaker</b>	Without speakers				
<b>Install method</b>	Horizontal/Vertical Wall Mount				
<b>Dimension</b>					
<b>56.6inch</b>					

Address:

3-4F, Longwenda Technical Park, No.14, Liuxian 1st Road, Baoan 71 District, Shenzhen, Guangdong Province, China

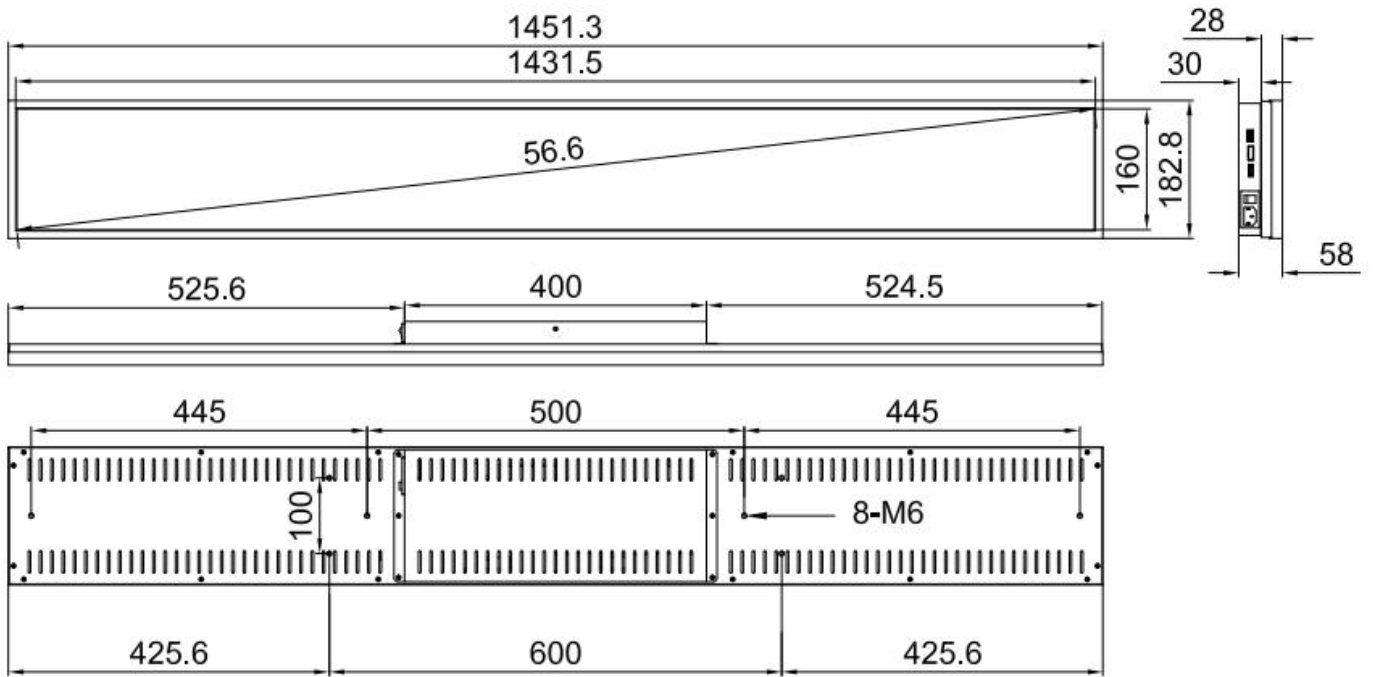
Tel:0086-755-27661355

Fax:0086-755-27865721

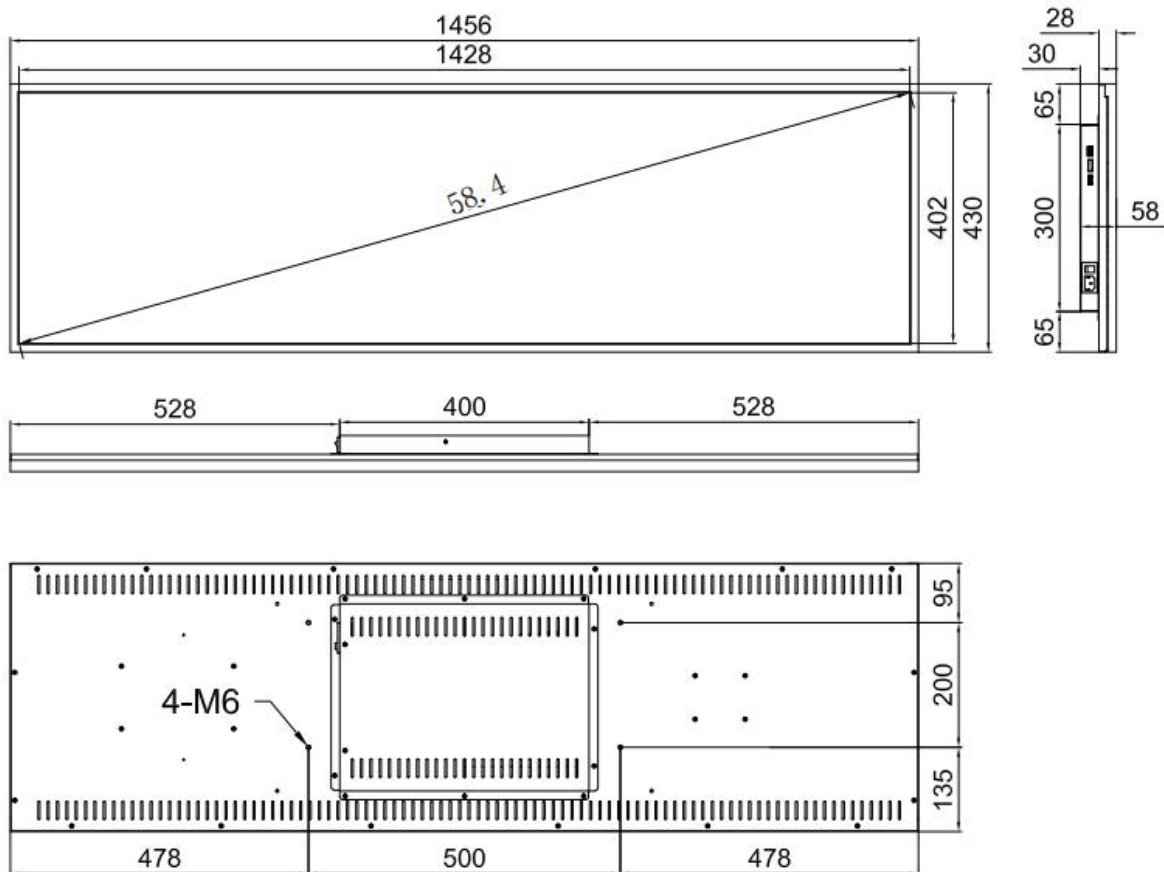
Mob:0086-13724286047

E-mail: lynn.l@asianda.cn

# Shenzhen Yaxunda LCD Display Equipment Co.,Ltd



58.4inch



Address:

3-4F, Longwenda Technical Park, No.14, Liuxian 1st Road, Baoan 71 District, Shenzhen, Guangdong Province, China

Tel:0086-755-27661355

Fax:0086-755-27865721

Mob:0086-13724286047

E-mail: lynn.l@asianda.cn