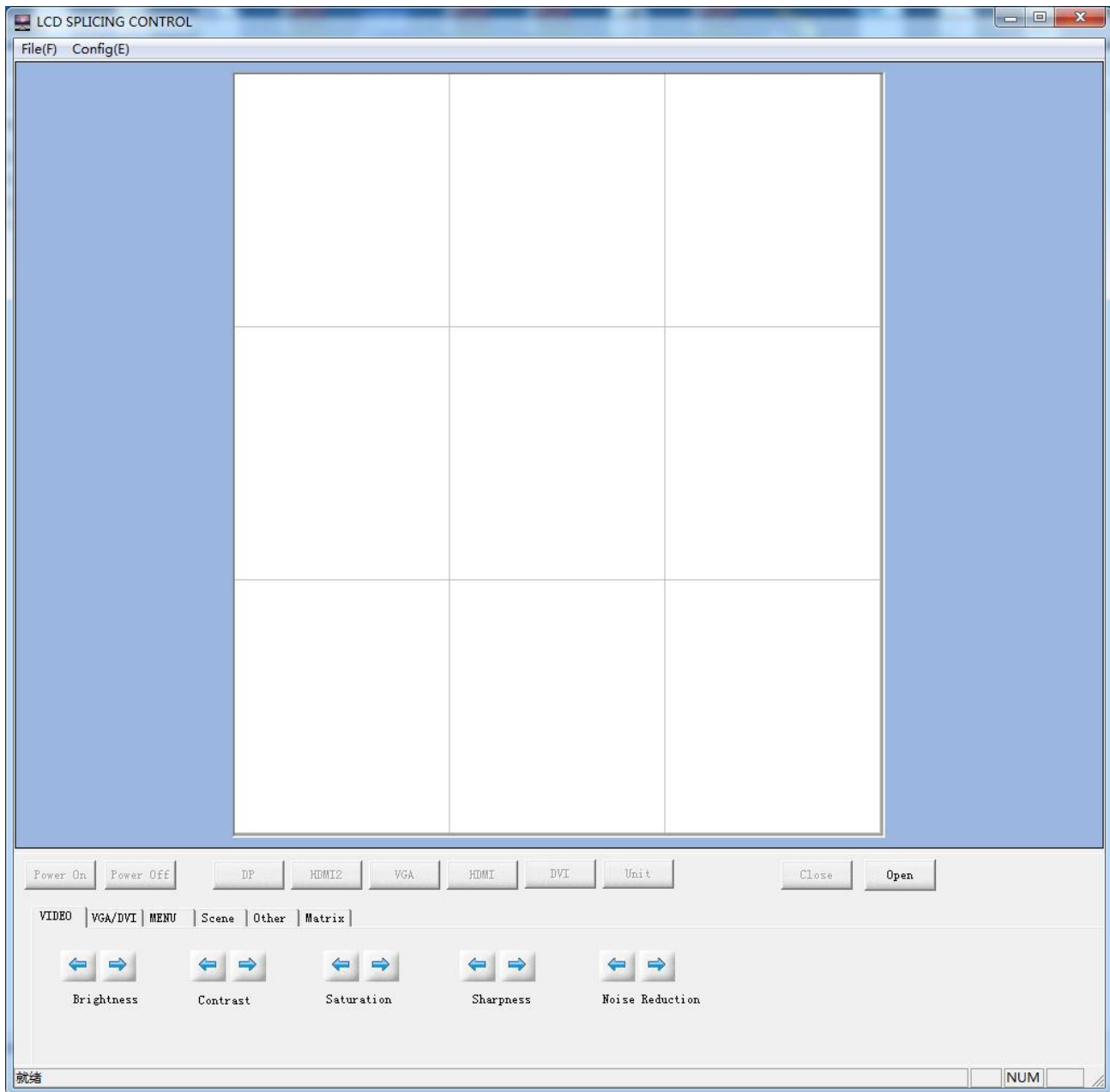


# DP Loop 4K Software Description

## Contents

Main Interface.....	2
1.1 Menu.....	2
1.2 Operation zone.....	5
1.2.1. Function zone.....	6
1.2.2. Addistional function zone:.....	7
1.3 Scene.....	10
2. How to control video wall.....	11
2.1 Connect cables.....	11
2.2 Software connection.....	11
2.3 Other control.....	17
2.4 Android control.....	18

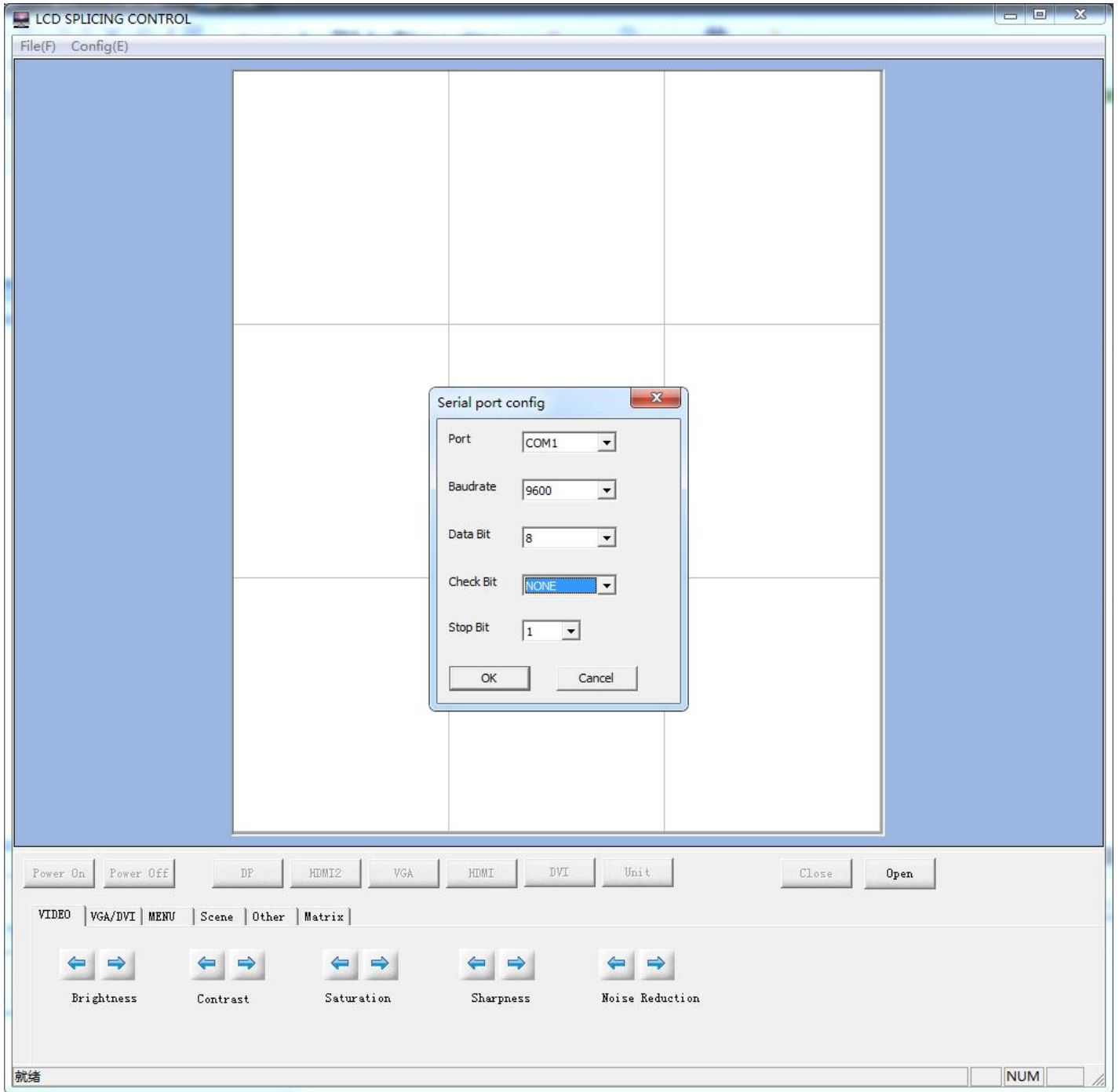
## Main Interface



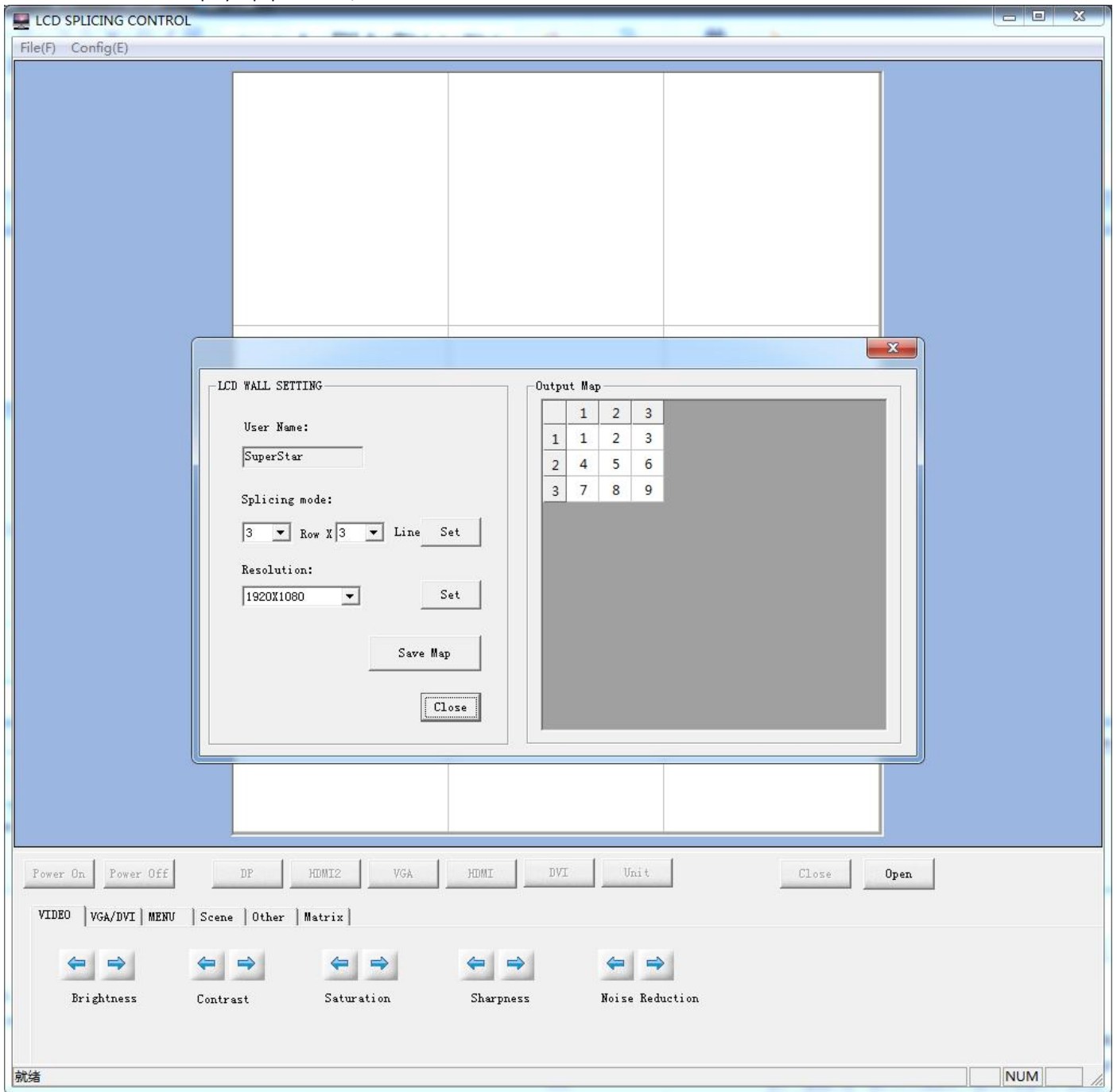
### 1.1 Menu

- File: Exit the software
- Management, password : 66666666
- Configuration:

(1)Connect: Firstly need to “close the com port”, then click “Connect” to choose the correct Com port, the other settings keep default

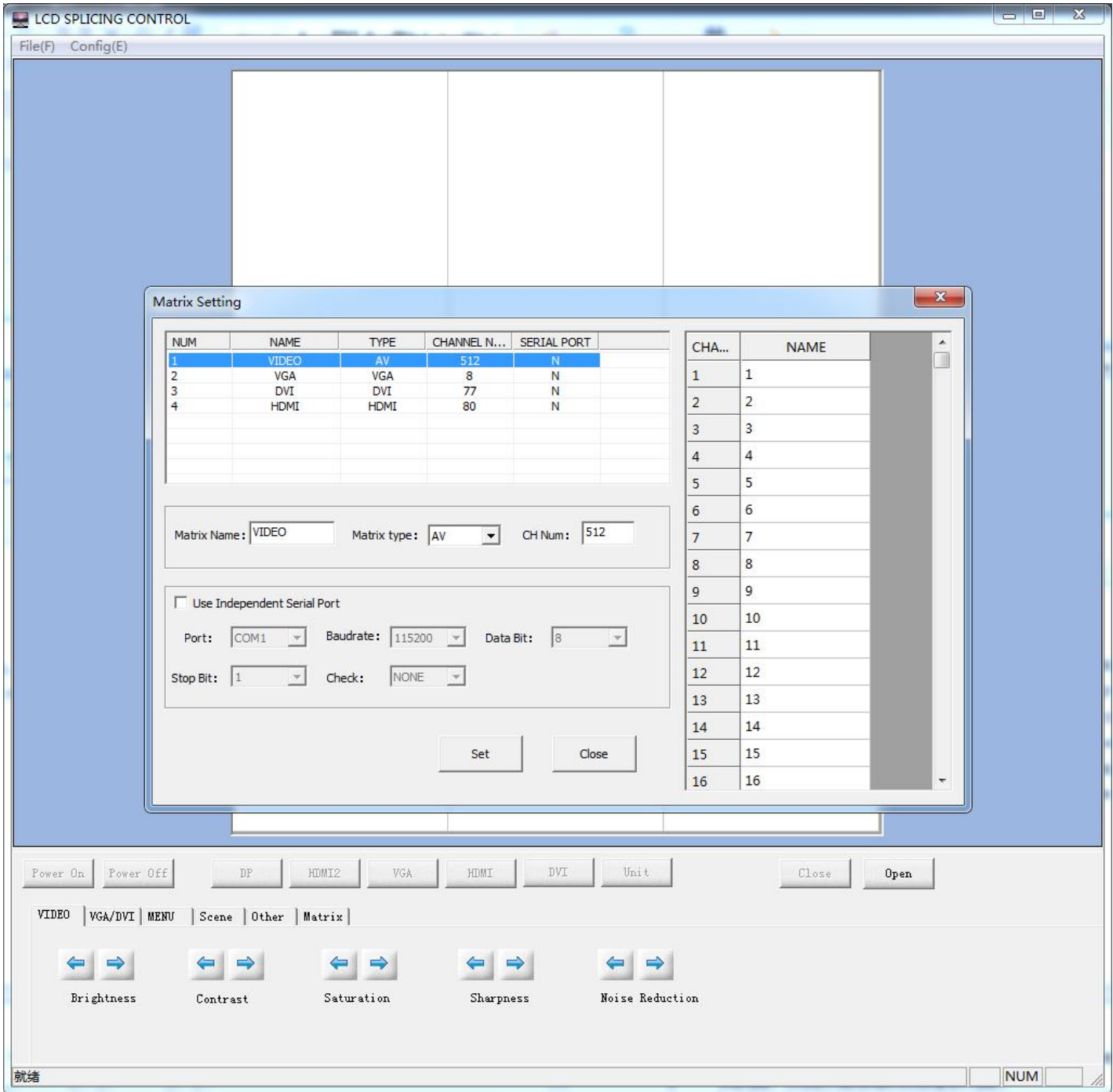


(2) LCD wall: set up according to the exact video wall Row andLine, click “Set”, and “Close” , then exit this setting.



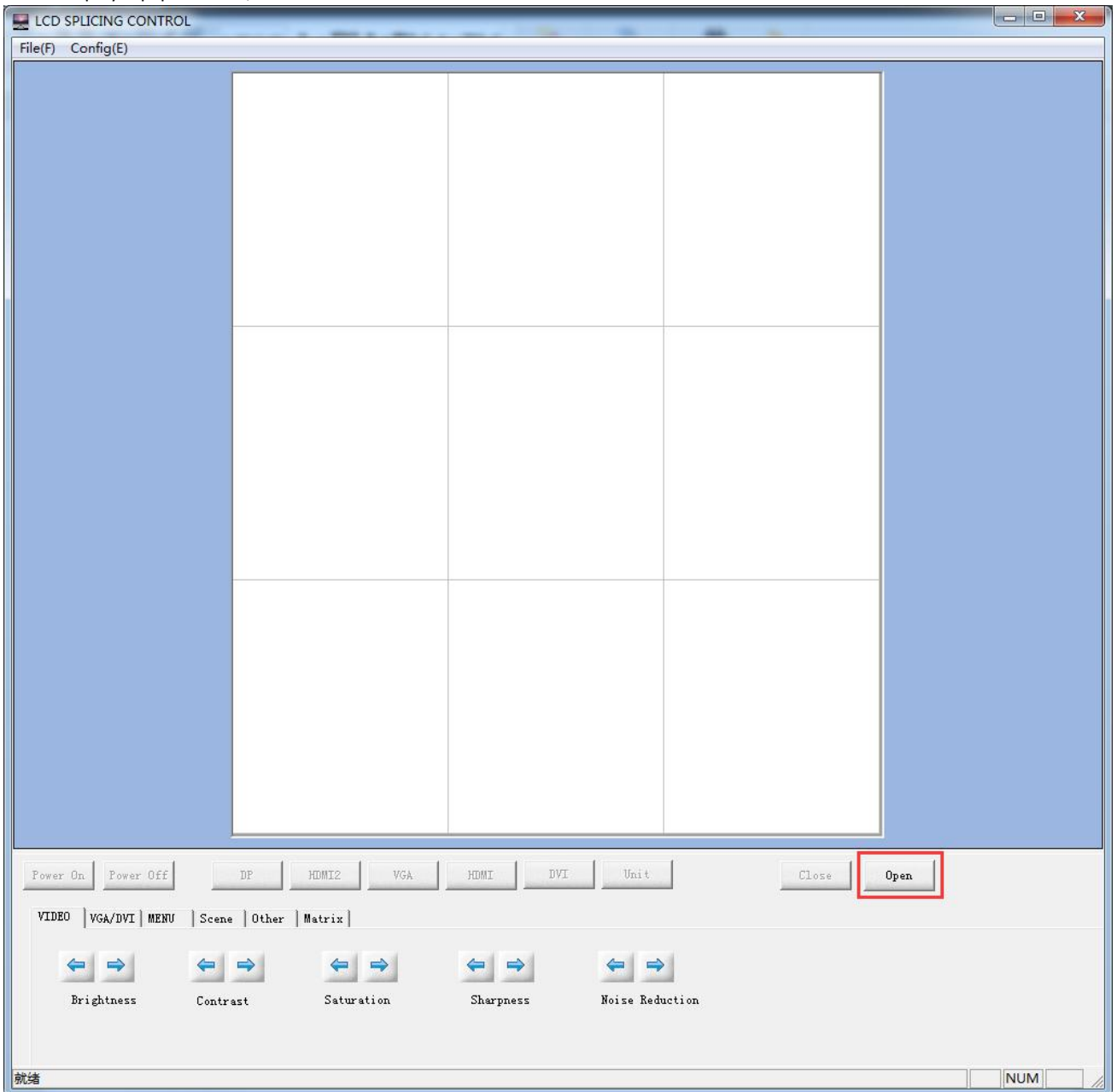
➤ (3) Matrix: Set up the matrix control information.

➤ Can set up different signal source HDMI/DVI/AV/VGA, input channel number, and independent serial port.



## 1.2 Operation zone

- Drag the mouse and move the cursor to select the screens, then put the cursor to the below “function zone”, click the relative button to adjust the setting. Except the “Serial port config” can be operated, all other settings can be operated only after click “Open” and make the LCD wall communicated.



## 1.2.1. Function zone:



- Power on: Under power off state, click this button to turn on the selected screen.
- Power off: Under power on state, click this button to turn off the selected screen.
- DP: After selecting the screen, click this button to switch the input signal of the selected screen to PD.
- HDMI2: After selecting the screen, click this button to switch the input signal of the selected screen to HDMI2.
- VGA: After selecting the screen, click this button to switch the input signal of the selected screen to VGA
- HDMI: After selecting the screen, click this button to switch the input signal of the selected screen to HDMI.
- DVI: After selecting the screen, click this button to switch the input signal of the selected screen to DVI
- Unit: After selecting the screen, click this button the selected screen can be executed the unit display under the current signal source
- Close: close the com port, all operation is invalid.
- Open: open the com port, all the operation is valid.
-

## 1.2.2. Addistional function zone:

### 1.2.2.1 VIDEO image adjust



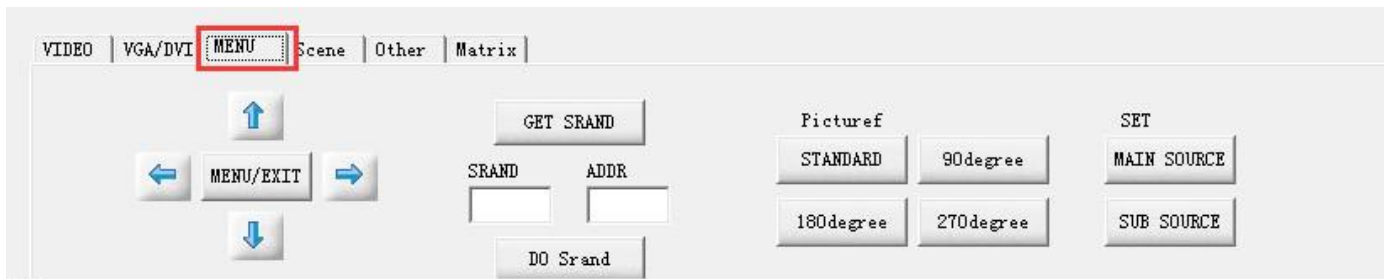
- Brightness: Adjust the brightness of the selected screen.
- Contrast: Adjust the Contrast of the selected screen.
- Saturation: Adjust the color dark and light of the selected screen.
- Sharpness: Adjust the Sharpness of the selected screen.
- Noise Reduction: Adjust the Noise Reduction of the selected screen..

### 1.2.2.2 VGA/DVI image adjust



- Brightness: Adjust the brightness of the selected screen.
- Contrast: Adjust the Contrast of the selected screen.
- H-position: Adjust the Horizontal position of the image.
- V-position: Adjust the Vertical position of the image.
- Clock: Transverse widening the display zone of the selected screen
- Auto: Intelligent adjust the selected screen.
- ADC: ADC auto adjust.
- Color Tem: Auto correction the VGA color difference.

### 1.2.2.3 MENU



- Menu/Exit: Open or exit the menu.
- Up: Cursor move up
- Down: Cursor move down
- Left: Menu move to left or decreasing adjust.
- Right: Menu move to right or increasing adjust.

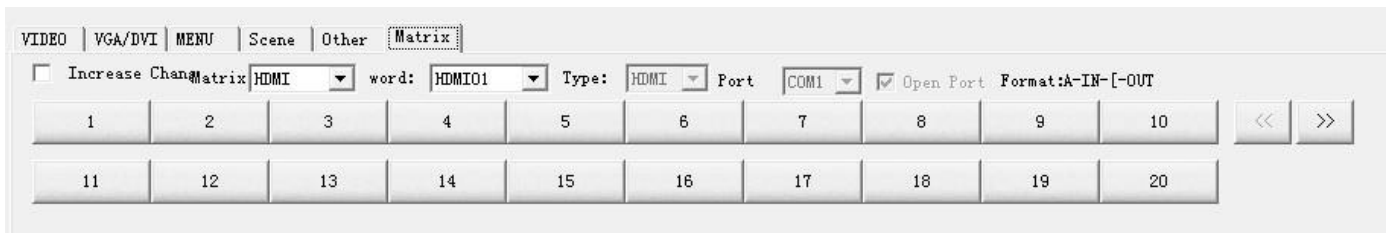
- Get Srand : Show the Srand number of the current screen on the LCD wall, fill in that number in the Srand. Fill in the screen ID in the add, click DO Srand, then the LCD wall ID finish setting.
- DO Srand: Execute the LCD ID setting.
- Picture rotation: support 0°,90°,180° and 270°rotation.
- Main source: Select the main source screen
- Sub source: Select the looping out screen.

#### 1.2.2.4 Frame display



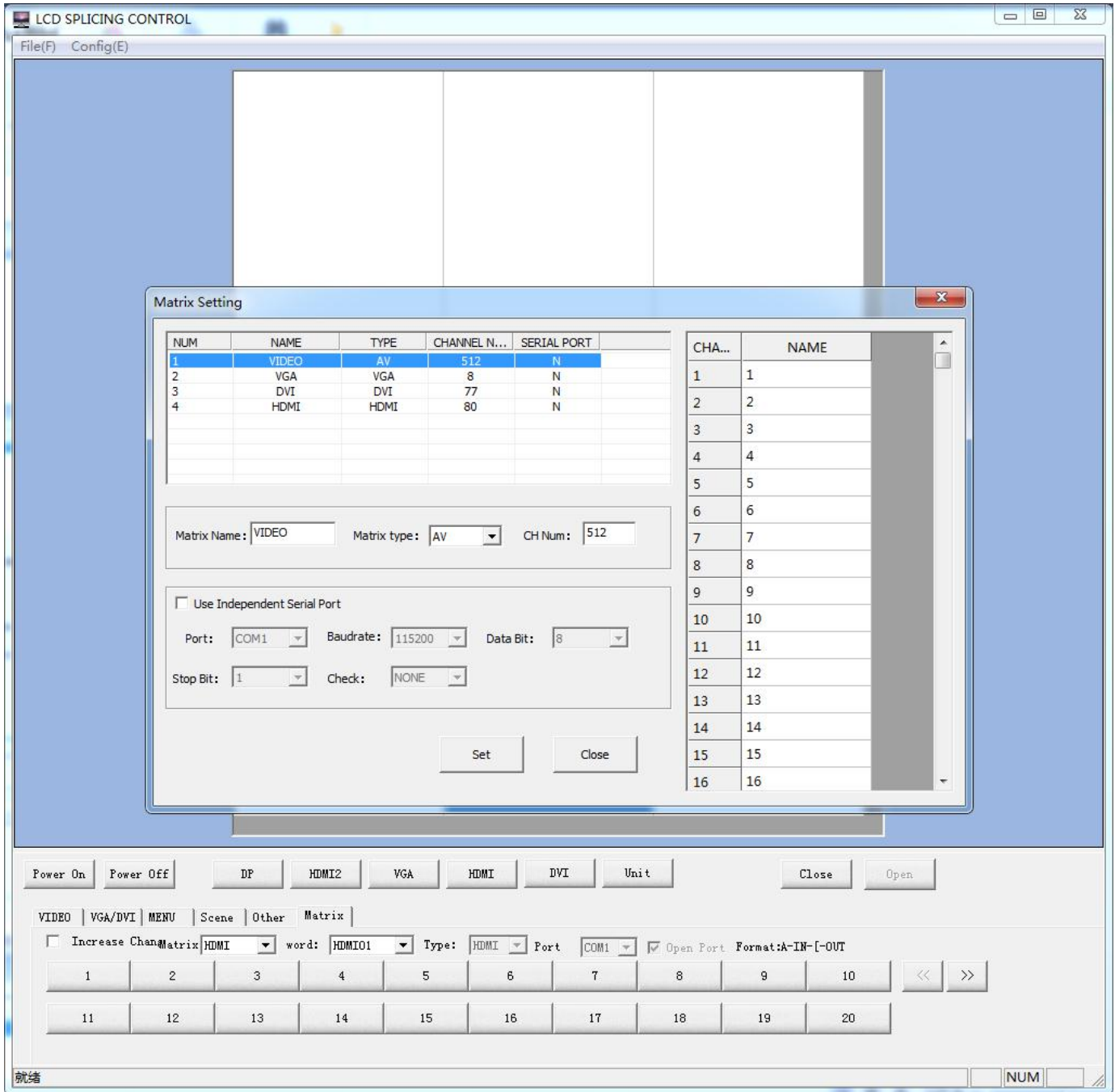
- Use frame effect: Check this option to manually adjust the frame display between the splicing display gaps.
- Factory menu: Open the factory settings menu for the screen in the selected area.
- Factory Reset: Performs a screen parameter setting reset to the original data.
- Static switch: Performs a still image on the image of the selected area.
- Fan control: [On], [Off] Manually control the temperature of the machine in the selected area. (Note: This function depends on the model, whichever is the actual product.)

#### 1.2.2.5 Large screen matrix linkage control

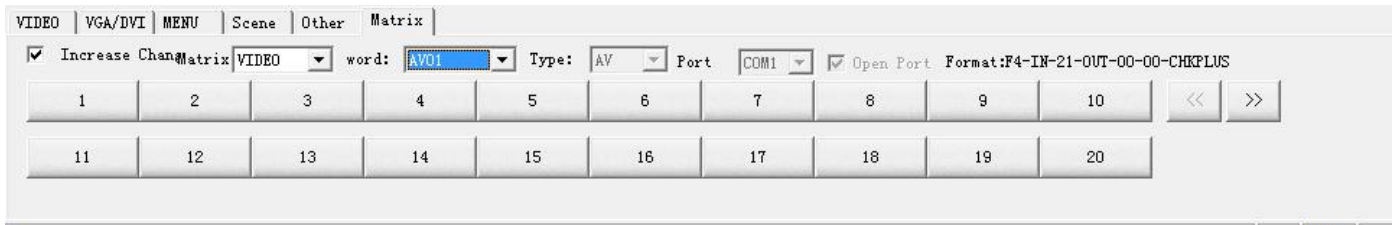
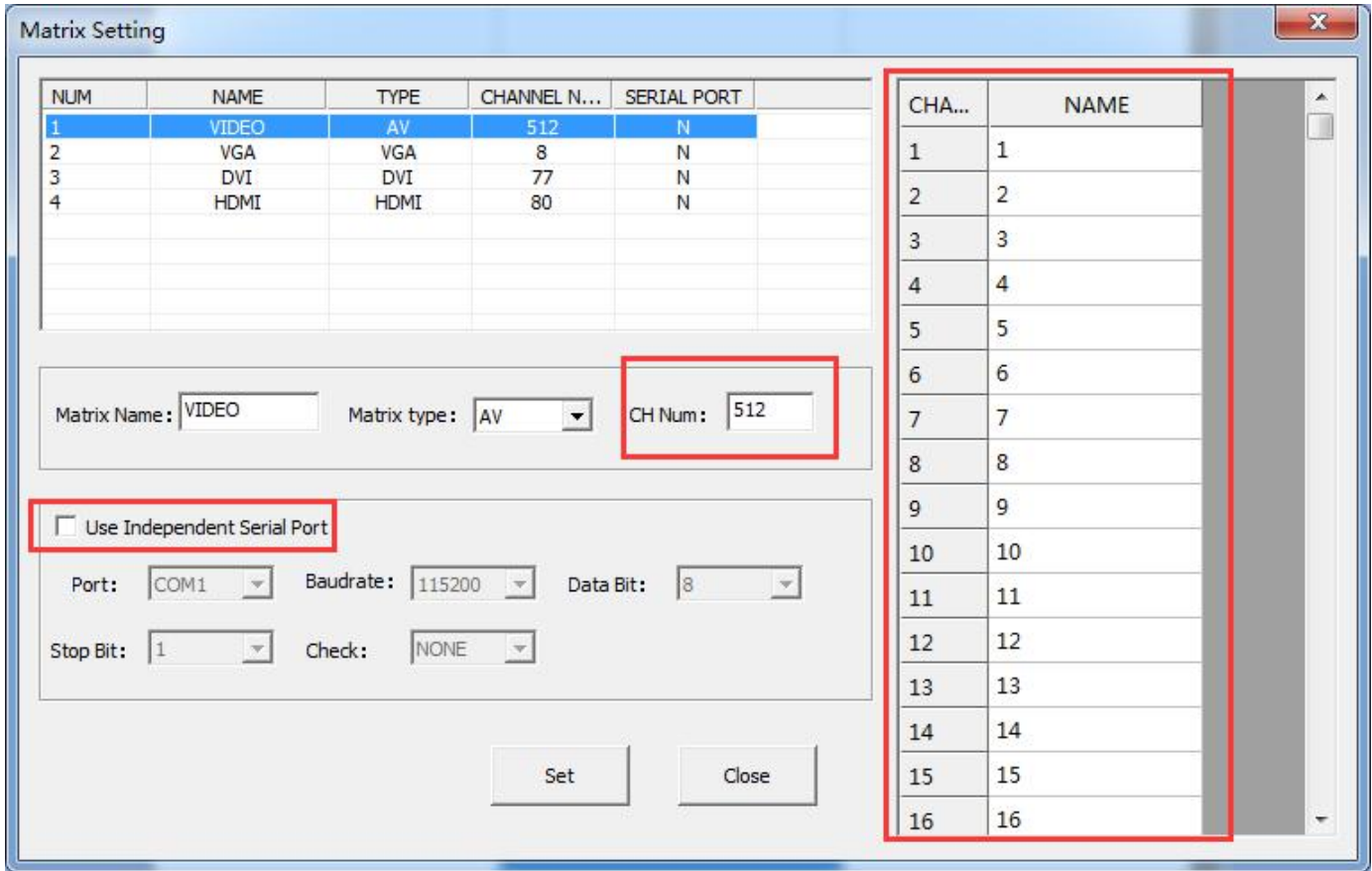


- In this state, the linkage control of VIDEO matrix, VGA/RGB-HV matrix, HDMI matrix and DVI matrix can be realized by clicking the method. The lower digital button is displayed as the matrix input port, and each unit corresponding to the operation area is Corresponding matrix output port display, only need to select the output unit of the operation area when performing matrix signal switching, and then click the digital button below to select the matrix signal input to realize the specified signal switching to the specified unit or multiple unit displays, to achieve Convenient and simple splicing operation, convenient for users.
- Incremental switching: Click this option to facilitate the user to display the multi-screen and display screen when the splicing recovery unit displays the disassembly display. Please cancel the check box when performing the splicing operation.
- The lower digital operation button is the matrix input port signal display, which can be modified according to user requirements. As shown below
- Click on the menu area System Configuration - Matrix Settings





On the right side of the options menu, you can edit the matrix button input channel name, set the number of matrix input channels and select to open the corresponding type of matrix serial port.



## 1.3 Scene



When making a plan, click the Recording Matrix function to save the switching command of the linkage matrix and the large-screen display mode at the same time, and then enter the corresponding project name in the drop-down list dialog box

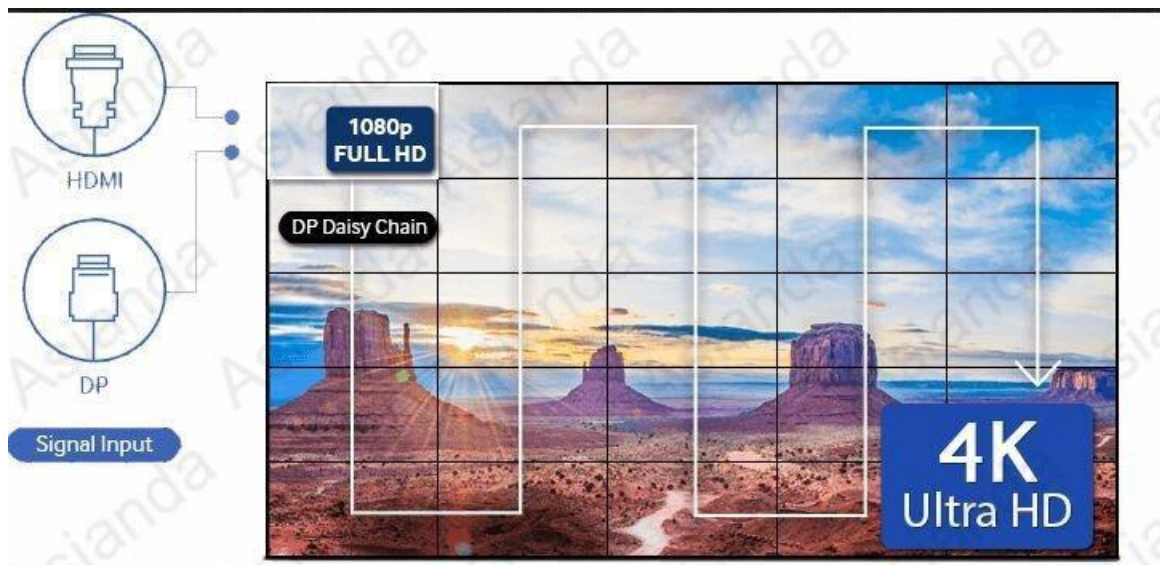


and click Rename.

Click to stop recording, and finally click Save to save the plan. The plan can be saved up to 20 kinds.

## 2. How to control video wall

### 2.1 Connect cables



Support multiple input signals on the main screen, then connect the DP loop & RJ45 control cable through one screen after another.

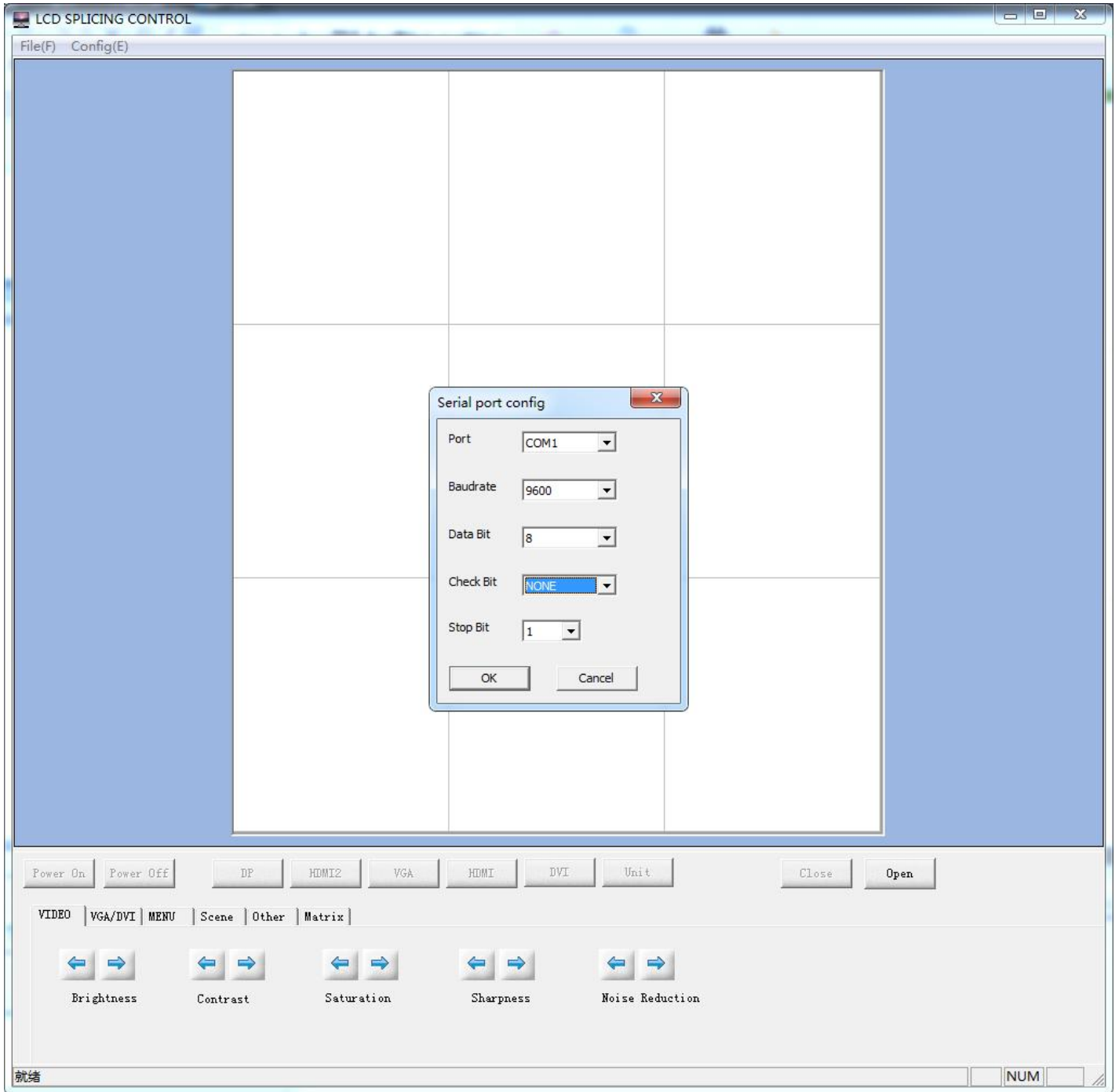
PS: For specific projects, please contact the relevant personnel to confirm

### 2.2 Software connection

2.2.1 Plug in the RJ45 cable from main screen to RJ45-RS232 adapter, then connect RS232-USB adapter. Plug into USB port of computer.

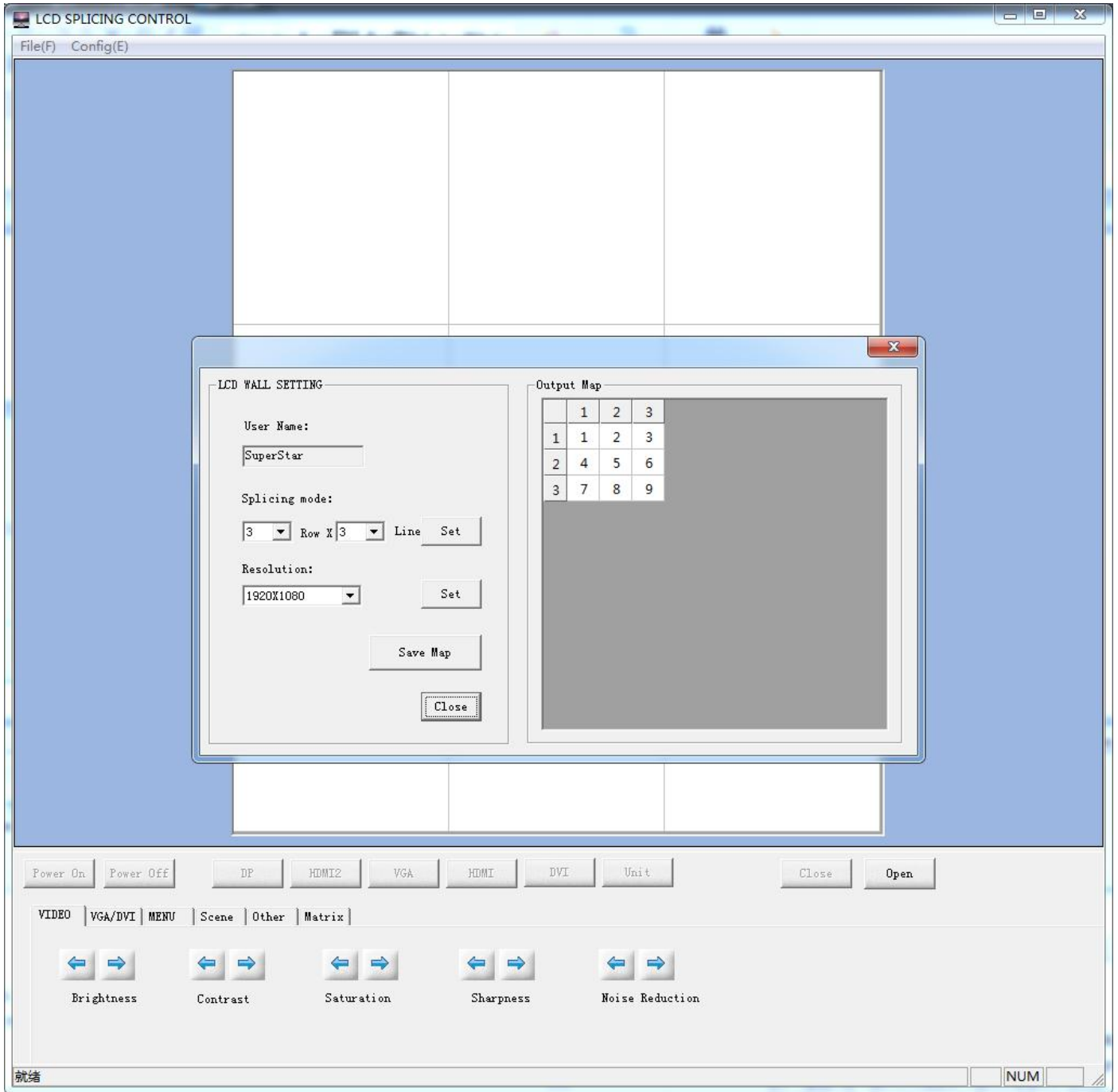
2.2.2 Check the Number of COM under "Device Manager" in "Control Panel"

2.2.3 Choose the right number of COM, then "Baudrate 9600", "Check bit No parity". Then "OK"

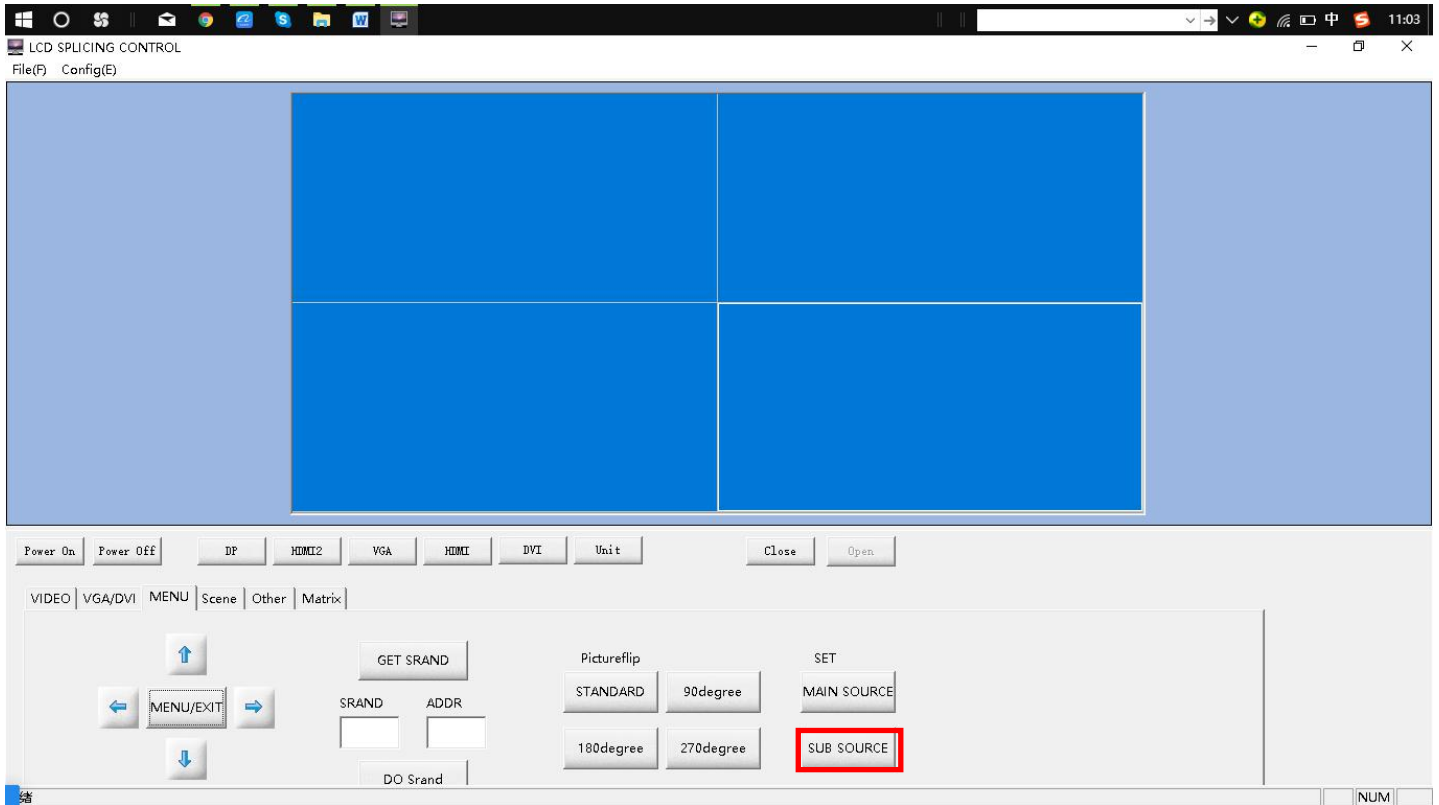


2.2.4 Set the corresponding stitching scheme, click “set” to confirm, then “Save Map””Close”

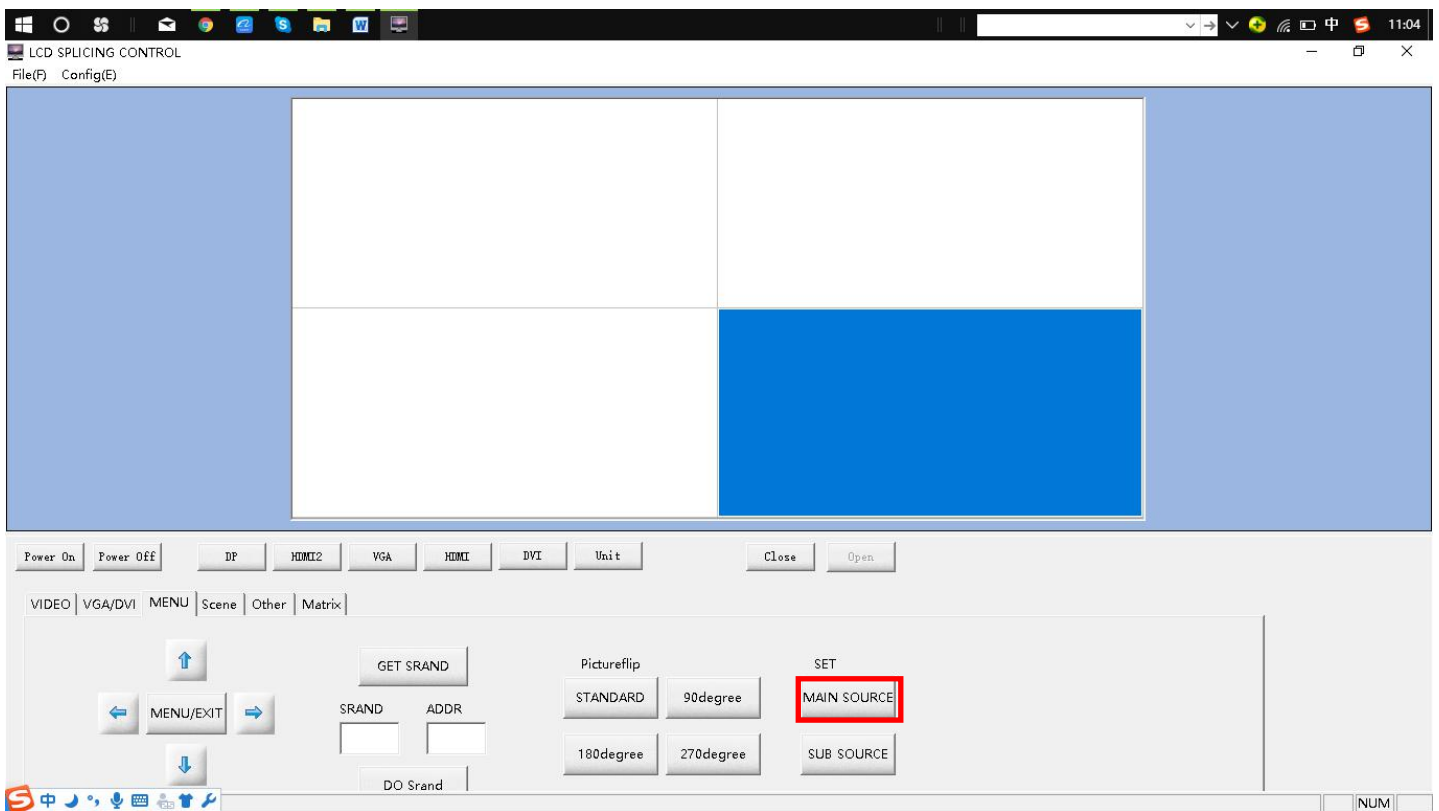
Note: 2\*2 is 2 Row x 2 Line



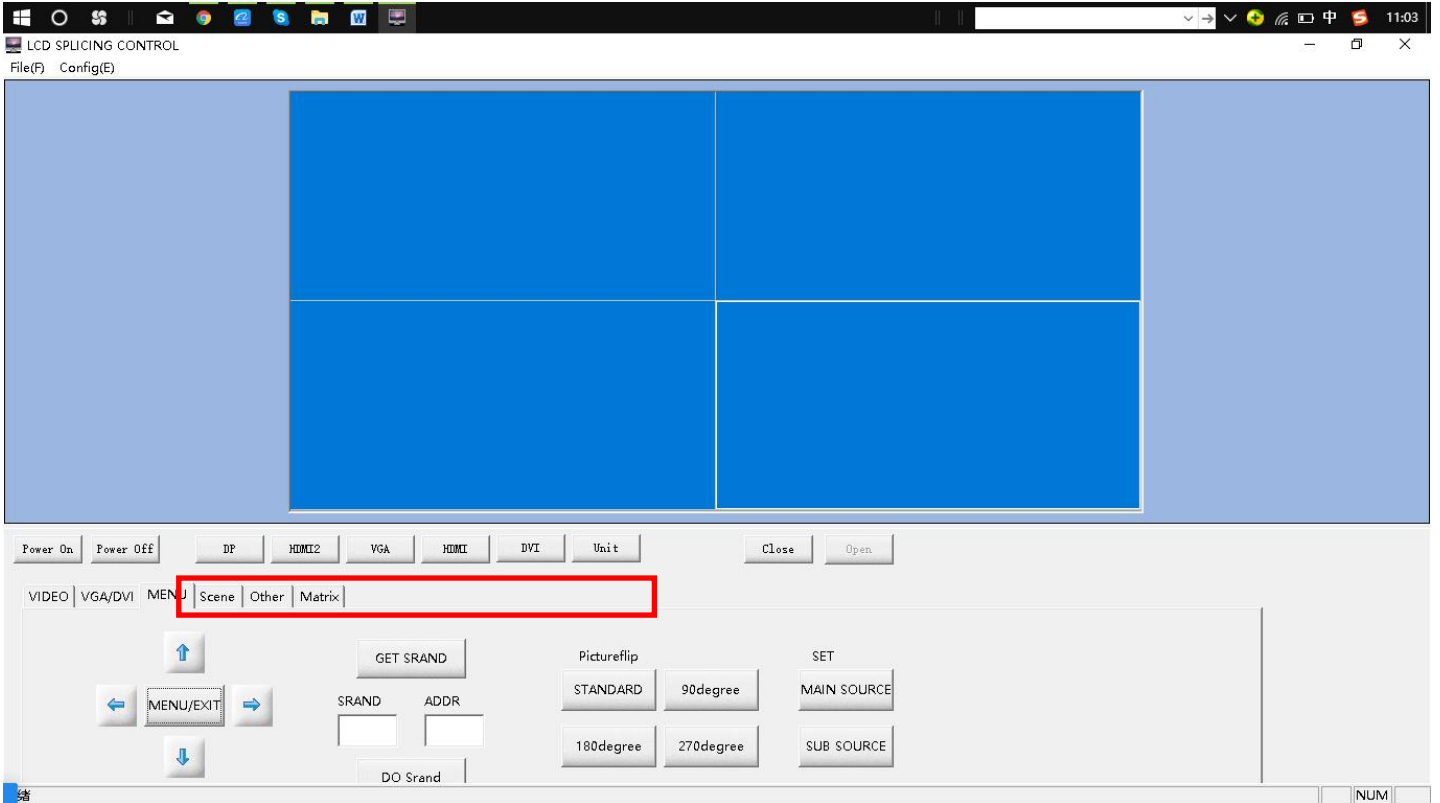
2.2.5 Choose all screens, then click "SUB SOURCE"






## 2.2.6 Choose the main input screen, click “MAIN SOURCE”

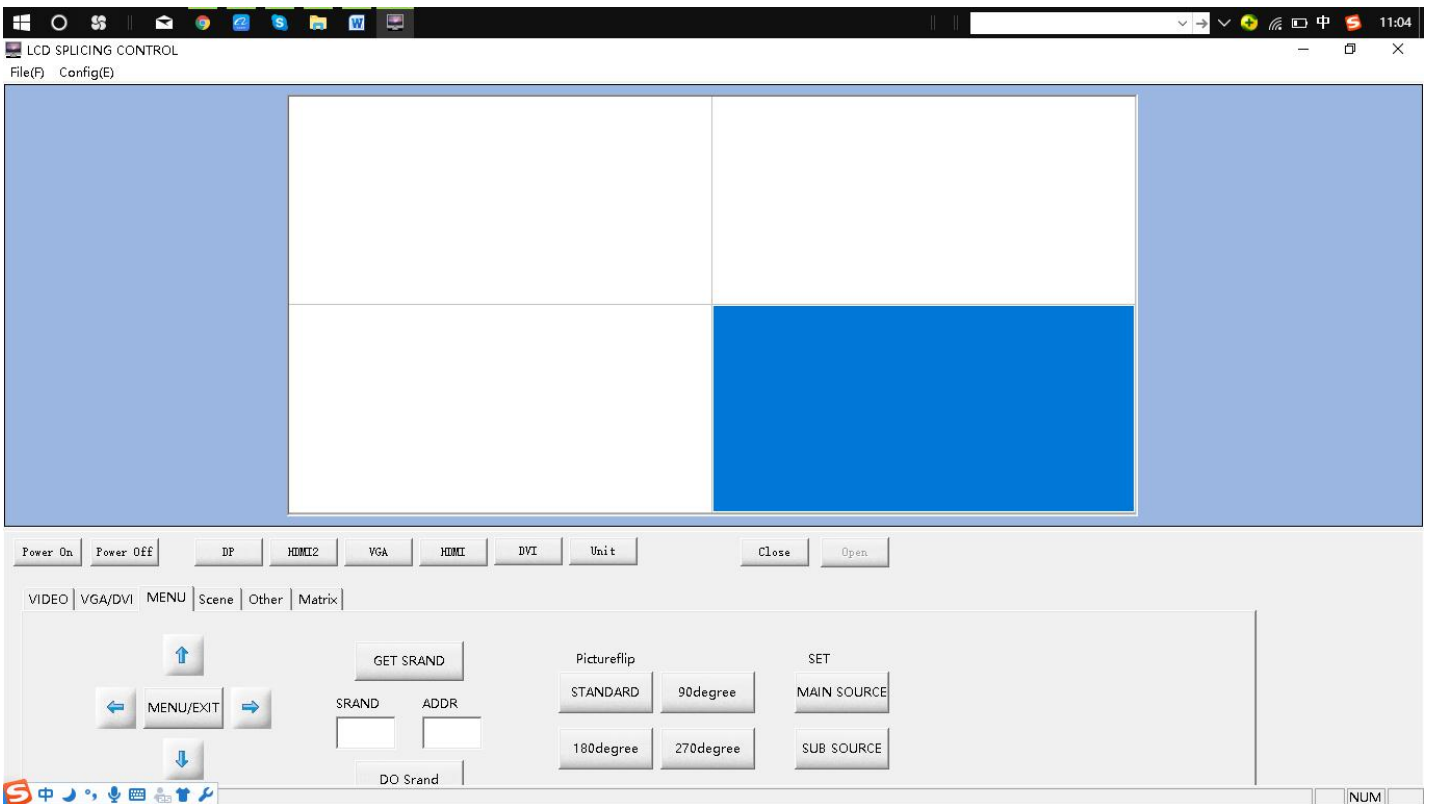


## 2.2.7 Choose all screens, click the right input signal. Plug HDMI input, that choose “HDMI”



## 2.2.8 The other way to change input signal

Choose main screen, double click , screen will show the Signal input selection bar, click   to choose input signal, then click "MENU/NEXT" to confirm





NOTE: Built in Android is "None"



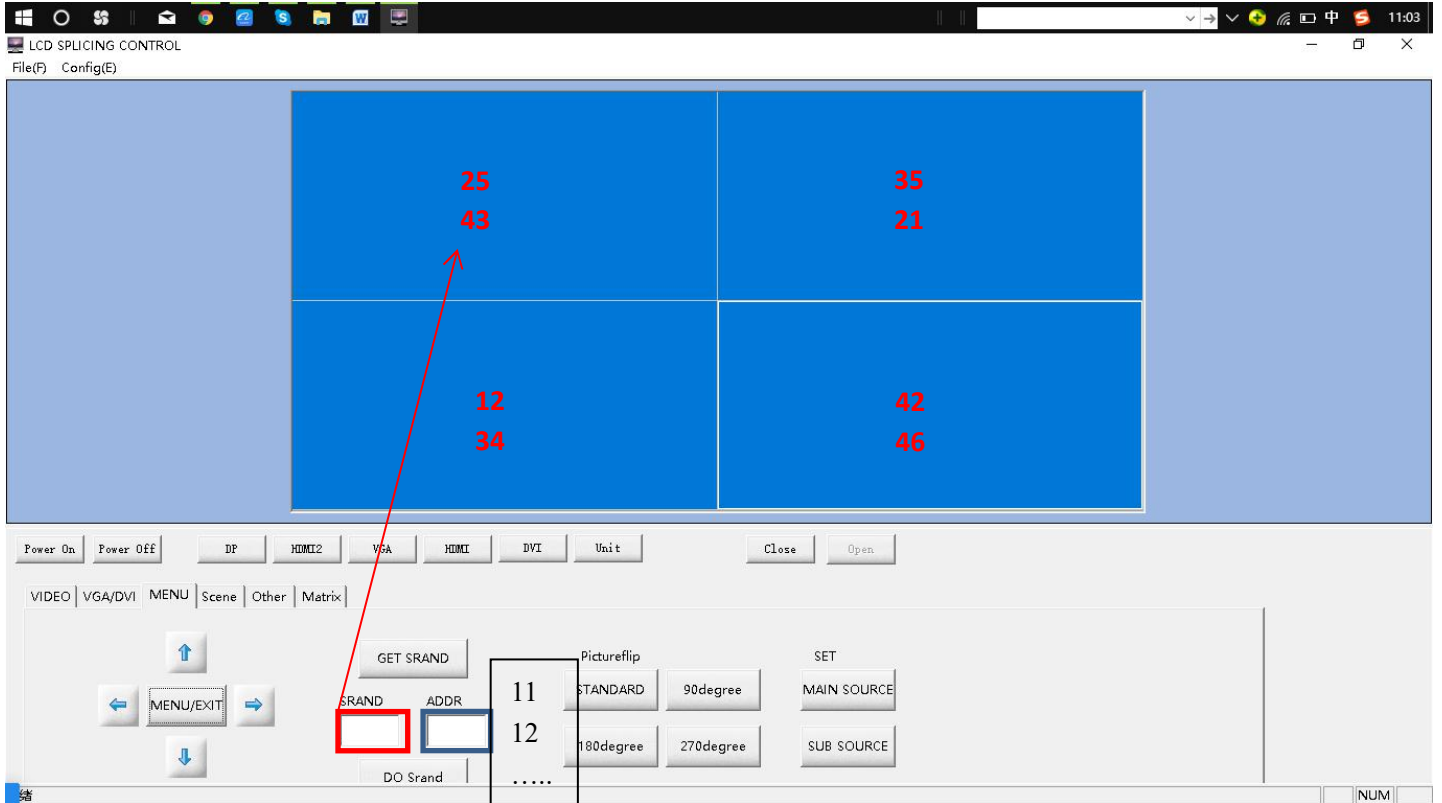


## 2.3 Other control

2.3.1 If the Address code uncorrect, reset address code.

2.3.1.1 Choose all screens, click“GET SRAND”,each screen will show a 4 numbers random address code.

2.3.1.2 Fill in the random address code in "SRAND", and "ADDR" fill in the corresponding address code of the video wall where the screen is located.



Address code setting "11" - first row first column

Address code setting "12" - the first row and the second column

Address code setting "21" - second row first column

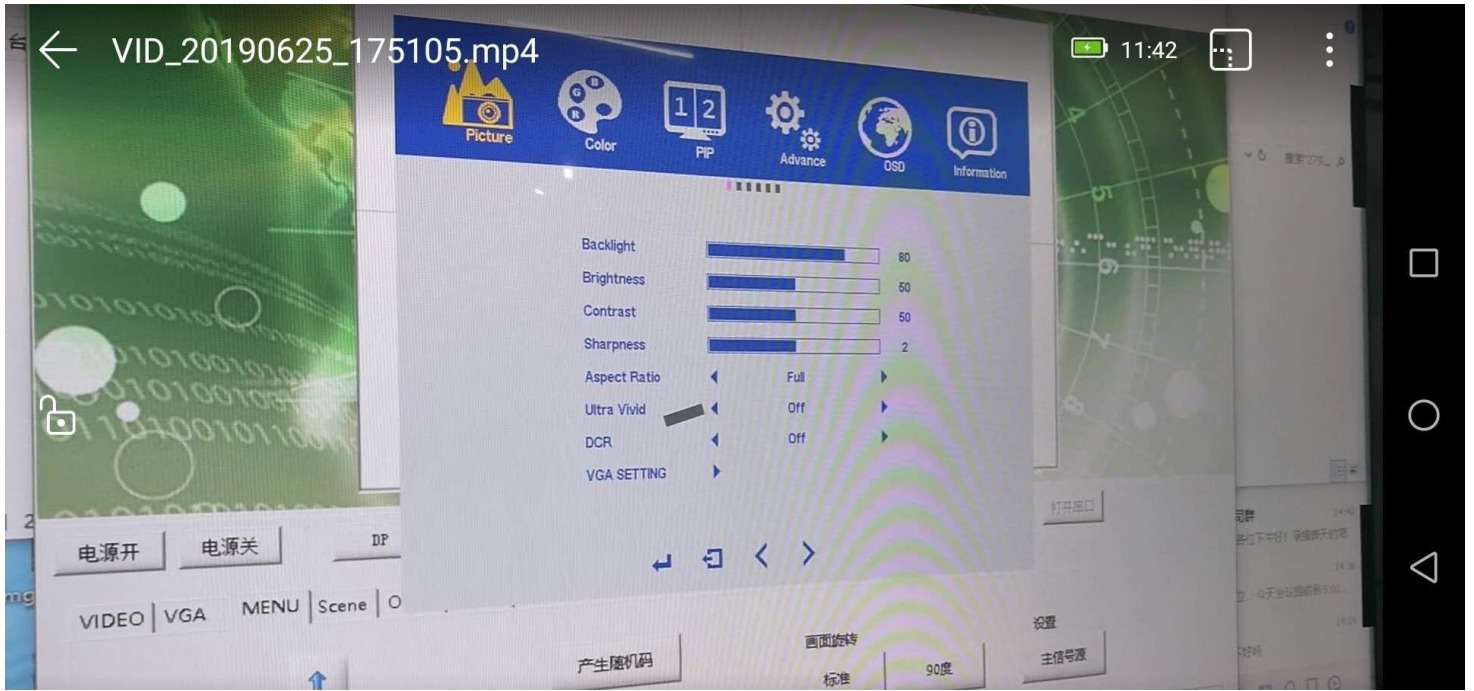
Address code setting "22" - second row second column

2.3.1.3 After the setting is completed, click “DO SRAND” to complete the operation. Then all screens do same step

2.3.2 System menu

2.3.2.1 Select the screen and click on “MENU”

2.3.2.2 According to the menu displayed on the screen, press the settings of the up,down, left and right control menu options.



2.3.3 More feature settings, which can be set according to software notes

## 2.4 Android control

Please read detailed about the user guide of Android CMS

If your products have any problems, please contact ours sales or directly call the below after-sales service telephone:

Customer Service Hotline: +86 755 27865713

Company email: [info@asianda.cn](mailto:info@asianda.cn)

Web: <https://www.asianda.cn/>

Product Range Pictures:

